

Product Catalog

2018



AnimalCareSystems.com

7086 S. Revere Parkway, Centennial, Colorado 80112

Email: info@AnimalCareSystems.com | Phone: 888-827-3861 | Fax: 720-283-0179



Contents

How it Works	3
Optimice	5
Rack Assemblies	6
Rack Options.....	7
Auto-Water Racks	8
Cage Assemblies	9
Cage Options	10
Blockparty Cage Options	11
Blockparty Cage Bases.....	12
Blockparty Tubes	13
Single-Use Caging	14
Cage Bases/Accessories.....	15
Cage Tops & Parts	16
Cage Filters	18
Cage Parts and Accessories	19
Cage Bottles.....	20
Water Parts & Accessories.....	21
Cage Parts/Feeders.....	22
Cage Card Holders & Accessories	23
Cage Dividers & Tox Floors.....	24
Enrichment Accessories.....	25
Other Accessories.....	26
Inhalation Caps & Nozzles	27

Ergomice	28
50-Cage Racks	29
70-Cage Racks	30
80-Cage Racks	31
Transport Boxes	32
Optirat Plus	33
Rack Assemblies	34
Auto-Water Racks	35
Cage Assemblies	36
Cage Bases.....	37
Cage Tops & Parts	38
Cage Filter Components	39
Bottles & Water Accessories	41
Cage Feeders	42
Cage Parts & Accessories.....	43
Optirat GenII	45
Rack Assemblies & Options	46
Auto-Water Racks	47
Cage Assemblies	48
Cage Bases.....	49
Cage Tops & Parts	50
Bottles & Water Accessories.....	51
Bottle Caps & Auto-Water Parts	53



Contents

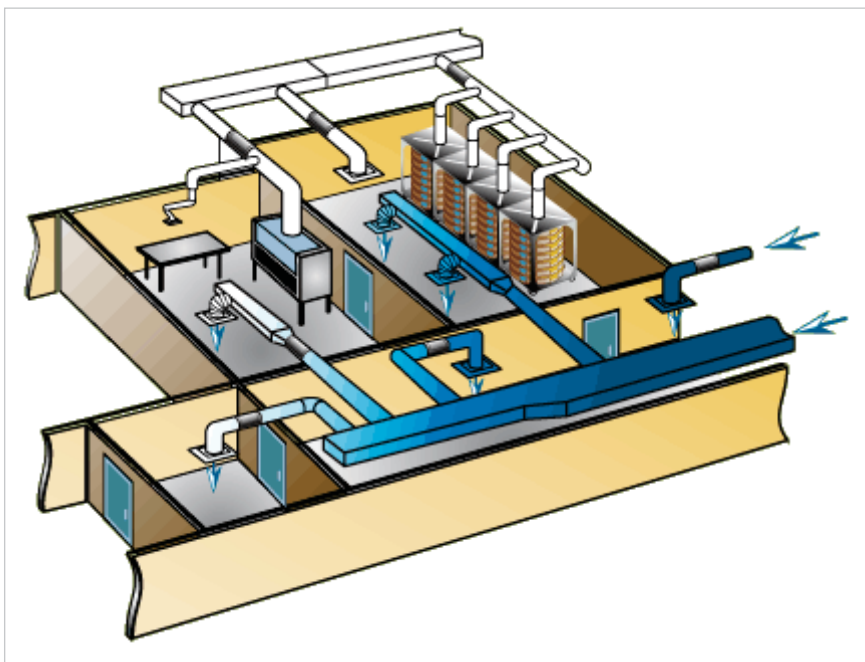
Cage Filters	54	Venting & Ducting.....	77
Cage Feeders	56	Duct Adapter Assemblies	77
Cage Parts & Accessories.....	57	Hose Assemblies & Parts	78
Miscellaneous Components	58	Flanges & Caps.....	79
Optirat.....	59	Quatro Air.....	80
M.I.C.E.....	60		
Bare Rack Assemblies — No Cages.....	61		
Full Rack Assemblies — Mouse Cages	62		
Full Rack Assemblies — Rat Cages.....	63		
Cage Assemblies	64		
Cage Components — Mouse	65		
Cage Components — Rat.....	66		
Cage Filter Components	67		
Cage Water Bottles	68		
Cage Feeders	69		
Rack Spare Parts	70		
Other Accessories.....	71		
Material Handling.....	72		
Carts & Baskets.....	73		
Change-out Rack.....	74		
Rack Accessories.....	75		
Miscellaneous.....	76		



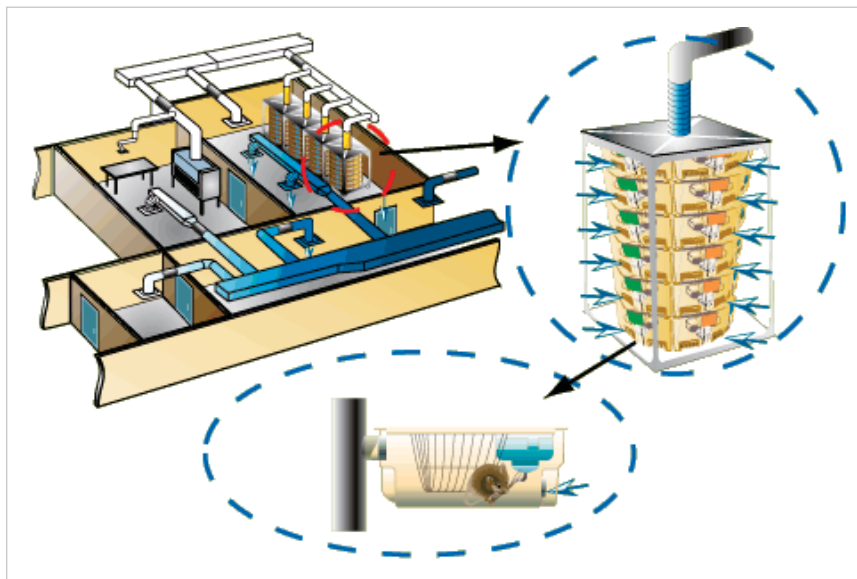
How It Works

For decades, bioresearch facilities have relied on negative air pressure containment to secure and handle the world's most dangerous biological agents. The same principle extends to our exhaust ventilation technology, which uses negative pressure from the animal room exhaust system to draw and filter room air through cages and racks in a one-pass flow pattern, providing superior air quality and complete bioisolation between the cages and surrounding room. This technology eliminates airborne contaminants, including allergens, waste gases, and thermal loads at the cage level. Our caging systems improve and control air quality for animals, personnel, and the environment.

1. Fresh or HEPA-filtered air, represented in blue, is supplied by the building's HVAC system to the animal room.

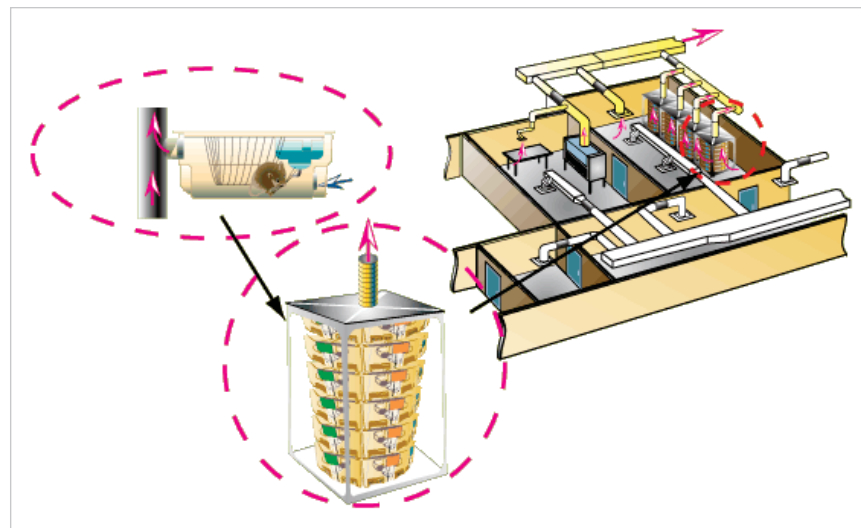
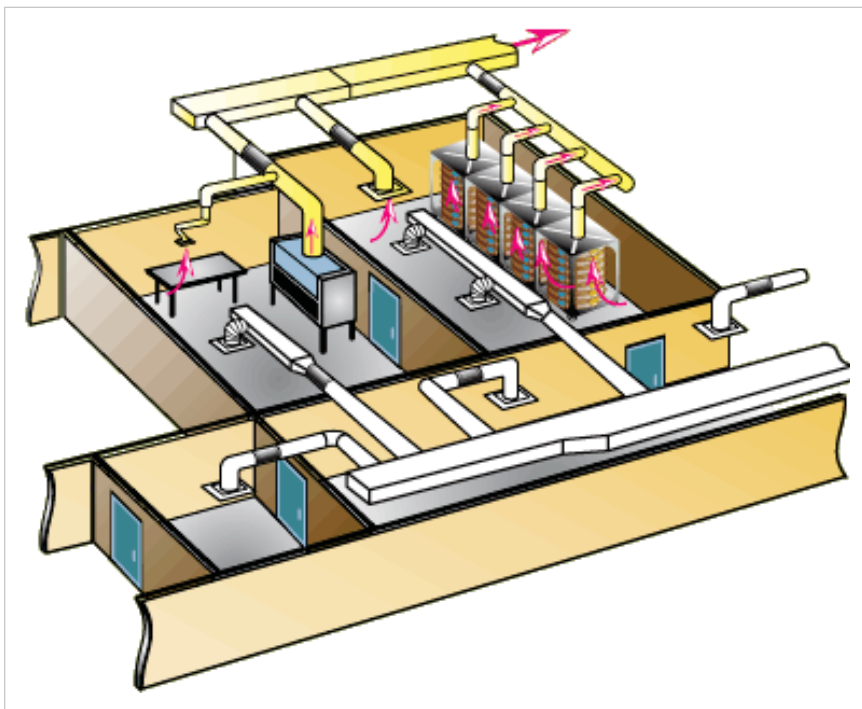


2. Because the racks are connected to the negatively pressurized exhaust system, this fresh air (blue arrows) is drawn into cages through their inlet filters at the appropriate flow rate to maintain the cage at the same temperature and relative humidity as the room.



How It Works

3. The air then leaves each cage through its rear exhaust filter and passes into the rack's central plenum. Red arrows indicate the various points at which air is drawn into the exhaust system, whether through the animal racks or from the room directly. The building's exhaust system then evacuates this air, represented in yellow, and it is processed and released to the outside.



Each stage in this succession represents a drop in relative air pressure, which completely eliminates the possibility of material traveling backward through the air circuit. This pressure drop, however, is quite small, and allows for a controlled low-velocity, one-pass airflow pattern that is free from turbulence and excessive dry-air turnover. In addition, all Animal Care Systems caging systems achieve a total volume air change within each cage, which results in exceptional air quality for the animals and a very stable micro-environment. The high-density configuration and energy-free operation provide substantial operational savings.

Highest Cage Density in the Industry

Based on the patented direct exhaust ventilation technology used in the original M.I.C.E. system, Optimice boasts the highest cage density in the industry, optimizing the density-value equation.


Optimice can be positioned against a wall or next to another rack. By rotating the carousel using conveniently located handles on each platter, cages are easily accessed. There's no need to waste space with large aisles, and no need to move racks for access. Simply stand in one place and bring the cages to you.

Because Optimice creates a low-stress, non-variable environment, it is ideal for housing and breeding research mice and delicate strains. Optimice cages bio-exclude and bio-isolate, and can be used for quarantine and biocontainment.

Optimice is simply the best possible system for optimizing space and enhancing the quality of life for animals and their caregivers.

Caging Accessories

We offer a full range of standard and custom accessories designed to optimize our caging systems and maximize the efficacy of lab animal research.

	Optimice Rack					
	Dimensions <i>Inches (mm)</i>				Weight <i>Pounds (kg)</i>	
	Depth	Width	Height	Auto-Water Height	Basic	Auto-Water
Full rack with card holders	40.5 (1029)	40.5 (1029)	76.5 (1943)	78 (1981)	613 (278)	659 (299)
Full rack no card holders	39.7 (1001)	39.7 (1001)			604 (274)	650 (295)
Empty rack	33.7 (856)	39.7 (1001)			326 (148)	366 (166)

Optimice features

- Small footprint, ultra-high density
- No motors, blowers, noise, or vibration
- Eliminates odors and allergens in the animal room
- Low-stress environment
- Available single-use caging, interchangeable in Optimice racks

Same operating principles as all Animal Care Systems racks

- Complete biocontainment and isolation
- Low-velocity, one-pass airflow with total volume air changes
- Lightweight, easy to maintain
- Simple cage assemblies with as few as three component parts

Optional automatic watering options

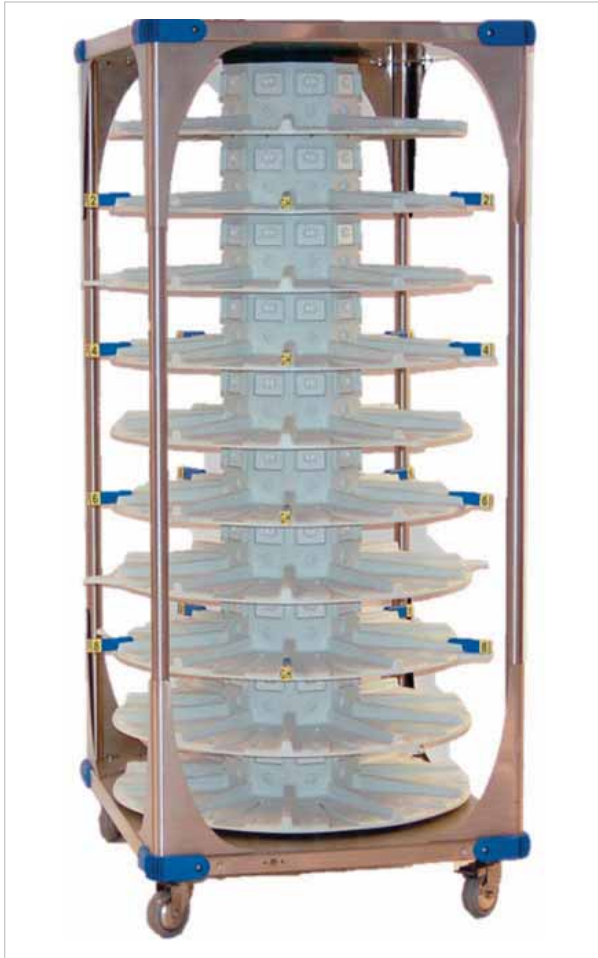
- Valve-on-cage (VOC)
- Valve-on-rack (VOR)
- Removable valve-on-rack (RVOR)



Optimice

Optimice Bare Rack Assembly—No Cages

Product: C77200



Rack Capacity:

10 Platters
10 Cages/Platter
100 Cages

Required Floor Space:

11.4 square feet (1.06 square meters)

Optimice Full Rack Assembly—Standard Cages

Product: C89100 M/P/S
With External Water bottles: C89104 M/P/S



NOTE: M/P/S refers to plastic type/color: M-Polycarbonate, P-Amber Polysulfone, S-Smoke Polysulfone

[Back to Table of Contents](#)

Rack options may be ordered only with rack assemblies.

External Water Bottles

Replaces standard cage tops with external bottle top and C79123 M/P/S bottle assembly.

Option: C78020 MB/PB/SB

External Water Bags

Replaces standard cage tops with external water bag tops and omits the bottle assemblies.

Option: C78020 MH/PH/SH

Internal Water Bags

Replaces standard water bottles with amber polysulfone internal water bag adapter.

Option: C78021PH

Filtered Cage Tops

Replaces standard cage tops with those containing an additional inlet air filter.

Option: C78220 M/P/S

Manual Feed Port

Replaces standard cage tops with those equipped with a spring-loaded manual feed port.

Option: C78231 M/P/S

Cannula Feeder-Bottle Guard

Replaces standard water bottle and feeder with a feeder-bottle guard.

Option: C78130 M/P/S



Rack options may be ordered only with rack assemblies.

Optimice Bare Rack Assemblies

No cages.

With Fixed Rack-Mounted Edstrom Valves

Compatible with C79102 M/P/S Optimice auto-water cages.

Product: C77302

Removable Edstrom Valve Option

Add to above rack to change valves to removable type.

Option: C78120

Ready for Cage-Mounted Edstrom Valves

Compatible with C79101 M/P/S Optimice auto-water cages. Valves not included with rack; all other auto-water provisions included.

Product: C77301

Ready For Cage-Mounted SE Lab Group Valves

Compatible with C79105 M/P/S Optimice auto-water cages. Valves not included with rack; all other auto-water provisions included.

Product: C77305

With Auto-Water, No Valves or Valve Couplings*

Cage compatibility depends on valve selection.

Product: C77602

Optimice Full Rack Assemblies

Cages included.

With Fixed Rack-Mounted Edstrom Valves

Includes C79102 M/P/S Optimice auto-water cages.

Product: C89302 M/P/S

Removable Edstrom Valve Option

Add to above rack to change valves to removable type.

Option: C78120

With Cage-Mounted Edstrom Valves

Includes C79101 M/P/S Optimice auto-water cages.

Product: C89300 M/P/S

With Fixed Rack-Mounted SE Lab Group Valves

Includes C79102 M/P/S Optimice auto-water cages.

Product: C89307 M/P/S

Removable SE Lab Group Valve Option

Add to above rack to change valves to removable type.

Option: C78122

With Cage-Mounted SE Lab Group Valves

Includes C79105 M/P/S Optimice auto-water cages.

Product: C89305 M/P/S

* Rack is plumbed for auto-water; however, valves/valve couplings must be acquired and installed before the auto-water system can be used.

Optimice

Optimice Basic Cage Assembly

Includes internal water bottle.

Product: C79100 M/P/S



Red Optimice Basic Cage Assembly

Available in polycarbonate only.

Product: C79100MRED



Optimice Auto-Water VOC Cage Assembly

Cage-mounted watering valve.

SE Lab Valve: C79105 M/P/S

Edstrom Valve: C79101 M/P/S



Optimice Auto-Water VOR Cage Assembly

Accommodates rack mounted valves (Edstrom or SE Lab; fixed or removable).

Product: C79102 M/P/S



Optimice Basic Cage Assembly with External Water Bottle

Includes external water bottle.

Product: C79104 M/P/S



Filtered Cage Top

Replaces standard cage top with one containing an additional inlet air filter. C79070 filter included.

Product: C78210 M/P/S



Manual Feed Port Top

Replaces standard cage top with one equipped with a spring-loaded manual feed port.

Product: C78230 M/P/S



External Water Bottle Top

Replaces the standard cage top and water bottle with a top containing a recess for an external water bottle and the necessary C79123 bottle assembly.

Product: C78240 MB/PB/SB



External Water Bag Top

Replaces standard cage top with one equipped to hold an external water bag and deletes the standard water bottle.

Product: C78240 MH/PH/SH



Internal Water Bag

Replaces the standard water bottle with the amber polysulfone internal water bag holder.

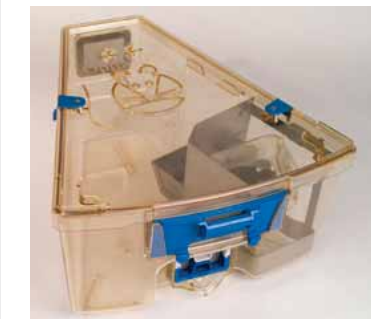
Product: C78241 PH



Cannula Feeder-Bottle Guard

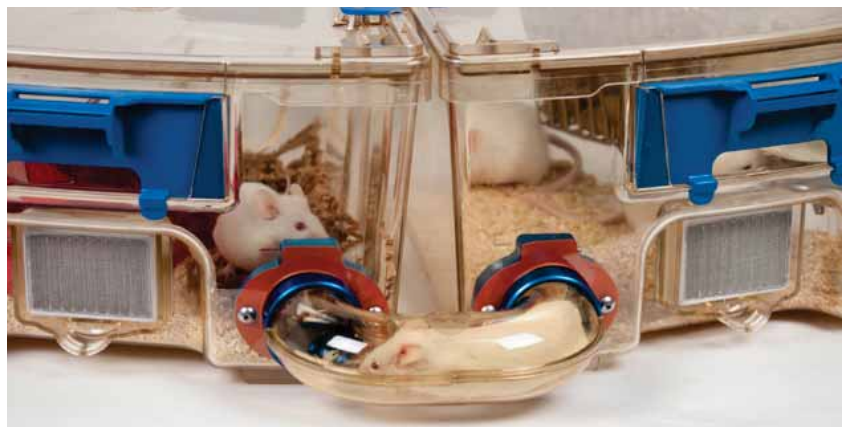
Replaces standard water bottle and feeder with a feeder-bottle guard.

Product: C78030 M/P/S



Optimice - Blockparty®

The Blockparty accessory option allows groups of two or more cages within the same level of a rack to be connected to combine living quarters. When the connecting tubes are removed, spring-loaded doors automatically close to block the openings. Available cages are compatible with all styles of Optimice racks.



Blockparty Cage Options

Add an option to the indicated cage or rack assembly to replace the existing cage base with one equipped for Blockparty.



Basic (Bottle or Bag Watering)

Add to C79100P complete cage assembly or basic rack assembly.

Product: C78250PBPD

Basic Red Polycarbonate

Add to C79100MRED complete cage assembly or basic rack assembly.

Product: C78250MREDBPD

Auto-Water Red, Rack-Mounted Valve

Add to C79102MREDDFF complete cage assembly or auto-water rack assembly with rack-mounted valve.

Product: C78252MREDBPD

Auto-Water, Rack-Mounted Valve

Add to C79102P complete cage assembly or auto-water rack assembly with rack-mounted valves.

Product: C78252PBPD

Auto-Water, Cage-Mounted Valve

Add to C79101P or C79105P complete cage assembly or auto-water rack assembly with cage-mounted valves.

Product: C78251PBPD

Cage Upgrade

This option will retrofit existing customer cages to Blockparty cages. *(Customer is responsible for shipment of cages to and from the Animal Care Systems warehouse.)*

Product: C79BPUPGRADE

Optimice - Blockparty

Optimice Blockparty Cage Bases

Cage bases include filters, cage card adapter, and applicable auto-watering provisions. Cage tops, bottles, and feeders (all interchangeable with standard Optimice caging) are not included. Blockparty connecting tubes also must be ordered separately.

Basic (Bottle or Bag Watering)

Product (pictured, right):
C79110(M/P/S)BPdff

Auto-Water, Cage-Mounted Valve Ready

Cage bases do not include watering valves.

Product: C79111(M/P/S)BPdff

Auto-Water, Rack-Mounted Valve Ready

Product: C79112(M/P/S)BPdff



Basic Red Polycarbonate

Product (pictured, right):
C79110MREDBPdff

Auto-Water, Cage-Mounted Valve Ready

Cage bases do not include watering valves.

Product: C79111MREDBPdff



NOTE: M/P/S refers to plastic type/color: M-Polycarbonate, P-Amber Polysulfone, S-Smoke Polysulfone

[Back to Table of Contents](#)



Optimice - Blockparty

Blockparty Connecting Tube Assemblies

Connecting tubes simply press into ports on cages. A detent locks the connection, and a mildly firm pull releases the connection. Available in amber or red color. Constructed from Radel R and sterilizable.

Amber: C79BP050

Red: C79BP050RED



Individual Blockparty Tube Components

Bare Tube Half

Plastic tube half only; two required per tube assembly.

Amber: C43BP050

Red: C43BP050RED



End Connector

Blue anodized aluminum. Sold individually (two required per tube assembly).

Product: C40BP050



O-Ring

Provides the necessary air-tight seal when tube is installed.

Product: C32BP010



Single-Use Cage Base

Packaged 26 per box.

Product: DBASE2

Single-Use Water Bottle Assembly

Includes bottle and cap; sold 128 per box.

Product: C79722

Bedding

Please contact your local sales representative for more information.

Product: C49100C

Single-Use Docking Tray

Allows a rack to accept single-use caging; trays are reusable.

Product: DTRAY

Single-Use Cage Top Types

Single-Use Cage Top for Water Bag

Product: DTOP2.HYD

Single-Use Cage Top for Water Bottle

Product: DTOP2.BOT

Single-Use Cage Top for[®]

Product: DTOP2.SIP

Feeders and cage card holders are included with cage tops. Boxes contain 32 of each.



Basic Cage Base Assembly

Includes cage card adapter kit and filters.

Product: C79110 M/P/S



Basic Red Cage Base Assembly

Available in polycarbonate only. Includes cage card adapter kit and filters.

Product: C79110MRED



Auto-Water Cage Base Assembly

Accommodates rack-mounted water valves. Includes cage card adapter kit and filters.

Product: C79112 M/P/S



Auto-Water Cage Base Assembly

For cage-mounted water valves; valves provided separately. Includes cage card adapter kit and filters.

Product: C79111 M/P/S



Compatible Valves

Edstrom: M45050

SE Lab: C45021

Optimice Auto-Water Pre-charge Station

Purge trapped air from cage-mounted valves before use.

Edstrom Product: C79360

SE Lab Product: C79365



Optimice Cage Base Skid

Placed at the bottom of a stack of cages, the cage skid enables effortless sliding across floor or other surfaces.

Product: C79390



Standard Cage Top Assembly

Product: C79290 M/P/S



Standard Red Cage Top Assembly

Available in polycarbonate only.

Product: C79290MRED



External Water Bag Cage Top Assembly*

C79280 cage top plug available upon request.

Product: C79290 MH/PH/SH



External Water Bottle Cage Top Assembly

Accommodates C79123 water bottle.

Product: C79290 MB/PB/SB



Filtered Cage Top Assembly

Standard cage top equipped with an additional inlet air filter.

Product: C79290 FM/FP/FS



Wire Bar Cage Top Assembly

Allows a standard cage to ventilate statically. Do not use on cages installed in Optimice rack.

Product: C79295



Optimice

Manual Feed Port Cage Top

Equipped with a spring-loaded manual feed port.

Product: C79292 M/P/S



Optimice Cage Top Clip*

Replacement latching clips, sold as individual.

Product: C43170



* Replacement mounting screws, C30120, are available if needed

NOTE: M/P/S refers to plastic type/color: M-Polycarbonate, P-Amber Polysulfone, S-Smoke Polysulfone

[Back to Table of Contents](#)

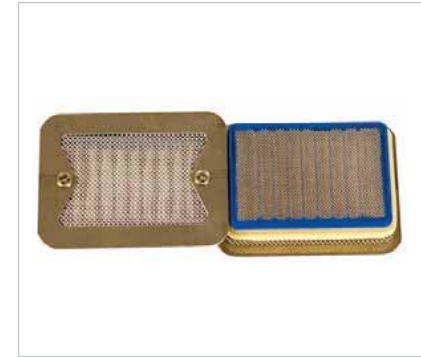
Optimice Flat Filter Assembly

Product: C79070



Optimice Pleated Filter Assembly

Product: C79073



Filter Flange

Product: C40135

Filter Retainer

Product: C79070SLCG
with

Filter Seal

Product: C79070SEAG



40 Mesh Screen

Product: C79070S40

Reemay Filter Media

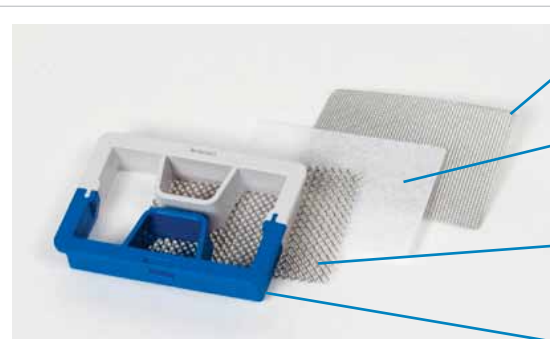
Product: C79070FLT

16 Mesh Screen

Product: C79070S16

Filter Retainer

Product: C79070RET



Metering Bottle and Holder Assembly

Includes two (2) autoclavable metering bottles and holder.

Product: C79125

Metering Bottle Only

Autoclavable

Product: C79135



Light-sensitive Metering Bottle and Holder Assembly

Easily view volume of water consumed. Includes two (2) light-sensitive metering bottles and holder.

Product: C79125A

Light Sensitive Metering Bottle Only

Product: C79135A



Optimice Double Water Bag Holder for Divided Cage

Double water bag holder made from stainless steel with polycarbonate windows to easily view water levels. Holds two 250-mL water bags. Compatible with both polycarbonate and stainless steel dividers.

Product: C79336



Optimice Bottle Hanger

Product: C40320



Optimice Internal Water Bag Holder Assembly

Available in polysulfone only.

Product: C79126



Optimice Internal Bottle Assembly

Includes hanger and cap.

Capacity: 400 mL

Product: C79122 M/P/S

Bottle without cap

Product: C79132 M/P/S



Optimice External Bottle Assembly

Includes hanger and cap.

Capacity: 400 mL

Product: C79123 M/P/S

Bottle without cap

Product: C79132 M/P/S



Black Bottle Assembly

Available in polysulfone only.

Includes hanger and cap.

Capacity: 400 mL

Product: C79122PBLK

Bottle without cap

Product: C79132PBLK



Red Bottle Assembly

Available in polysulfone only.

Includes hanger and cap.

Capacity: 400 mL

Product: C79122PRED

Bottle without cap

Product: C79132PRED



Optimice Bottle Seal

Product: C41050



Standard Internal Bottle Cap

Product: C40150



External Bottle Cap

Allows bottles to fit the external bottle cage top.

Product: C40152



Ball Sipper Tube Bottle Cap

Ball provides a better seal with fewer incidental drips.

Product: C40153



Watering Valves, Rack-Mount Removable

Valve: C45027A

Air Seal: C45160

Watering Valves, Cage-Mount

Edstrom: M45050

SE Lab: C45021



Water Cap Valve Assembly

For use with cage-mounted valves only.

Product: M45080A



Edstrom Auto-Water Deprivation Cap

Product: M45055



Optimice Standard Feeder

All stainless with scruffing grid.

Capacity: 510 cubic centimeters (31 cubic inches)

Product: C40101SG



Optimice Large Capacity Feeder

Capacity: 721 cubic centimeters (44 cubic inches)

Product: C40103

With Scruffing Grid

Product: C40103SG



Optimice High Clearance Feeder

Provides increased clearance between feeder bottom and cage floor.

Product: C40106



Optimice J-Feeder

For powdered or fine pellet feed.

Capacity: 500 cubic centimeters (30 cubic inches)

Product: C40180



Cannula Feeder-Bottle Guard Assembly

A special trough feeder and water bottle that minimizes the risk of damage to head implants.

Feed capacity: 100 cubic centimeters (6 cubic inches); bottle capacity: 236 mL

Product: C79130

Feeder Guard Only

Product: C40328

Water Bottle Only

Product: C79140



Optimice Feeder Bottom Guard

Guard prevents mice from going under the feeder. Can be used in the standard feeder hanging position or with a Unimice Cage Divider.

Product: C40110



Cage Card Adapter Kit

Includes card holder and adapter.

Product: C79253



Stainless Steel Cage Card Adapter Kit

Product: C79252



Cage Card Holder

Fits standard 3-inch x 5-inch cards.

Product: C43251



Stainless Steel Cage Card Holder

Product: C40252



Cage Card Adapter

Sterilizable.

Product: C43250



Cage Cards

Five colors available.

2.5-by-5-inch: C52011

3-by-5-inch: M52010



Unimice Polycarbonate Cage Divider Kits

Divide living quarters and food access.

Standard (shown): C79170M
Tox Floor Compatible: C79172M
Social Holes: C79173M

Individual Component Parts:

Front Clip: C40160
Rear Clip: C40161
Feeder: C40102



Unimice Stainless Steel Cage Divider Kit

For use with auto-water cages or water bottles; includes C40104 feeder.

Standard: C79171
No Bottle: C79174
Social Holes: C79171SOC
No Bottle: C79174SOC



Unimice Universal Stainless Steel Cage Divider

Compatible with auto-water; one water bottle must be present. Does not include feeder.

Divider: C40331
Feeder: C40104

Optimice Wire Bar Tox Floor

Large openings for thorough waste isolation.

Product: C40173



Optimice Standard Tox Floor

Stamped from flat sheet, more gentle on feet.

Product: C40170



Trough Tunnel

Nylon construction, not suitable for sterilization.

Product: M43040



DomicelSLE

3-inch-high, polycarbonate construction; sterilizable.

Single Product: C43810

Box of 50: C43810-50

Box of 250: C43810-250



Optimice Cage Top Prop

Suspends open cage top to avoid contamination from setting down.

Dimensions (L x W x H): 12 x 14.25 x 11 inches (30.5 x 36.2 x 28 cm)

Product: C61030



Gas Alert Extreme Single Gas Detector for NH₃

Product: C79NH3KIT1



Front Nozzle

Use with rear cap or rear nozzle.

Product: C7907FN



Rear Nozzle

Use with front cap or front nozzle.

Product: C7907RN



Rear Cap

Use with front nozzle or with front cap and inhalation cage top.

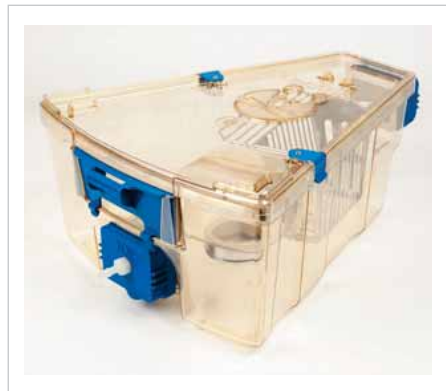
Product: C7907RC



Front Cap

Use with rear nozzle or with rear cap and inhalation cage top.

Product: C7907FC



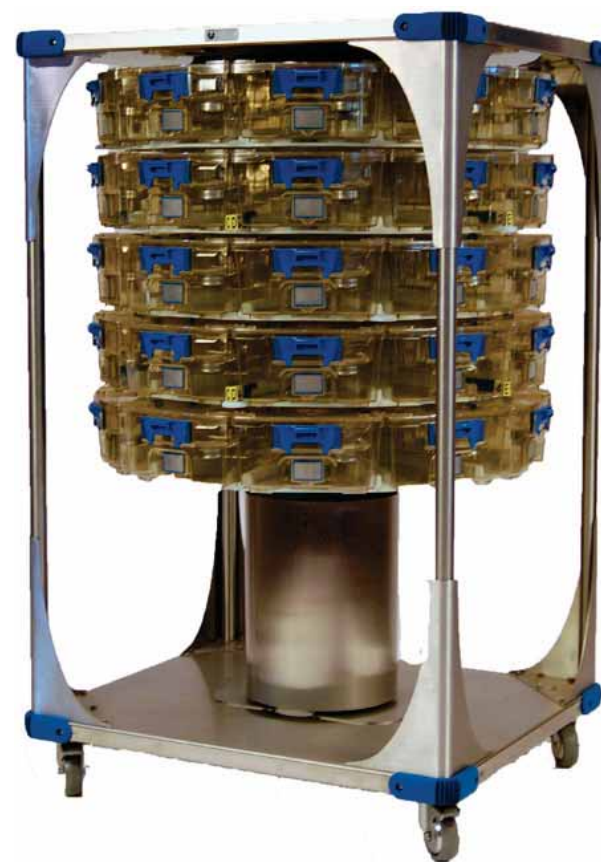
Animal Care Systems' Ergomice provides a compact and ergonomic caging system with all the features and benefits of our Optimice system.

The Ergomice line of racks provides a lightweight, lower-cost alternative to the Optimice caging, and is available in 50-, 70-, or 80-cage capacities. The 70-cage model eliminates the bottom three levels to minimize the need to bend down for access, while the 80-cage model has reduced height to accommodate shorter personnel; the 50-cage model incorporates both of these features but has the lowest animal density.

Ergomice racks use our standard Optimice cages and accessories, which are available in polycarbonate or two types of polysulfone plastic. While the 80-cage configuration has all the same watering options as Optimice, the 50- and 70-cage versions are not available with auto-watering options; bottles and other individual cage watering options are available (external bottles, water pouches, etc.).

Optimice Form and Function, Superior Ergonomics

- No noise or vibration
- Saves energy
- Extremely lightweight
- Easy and comfortable handling and maintenance
- Eliminates allergens and odors
- Low-velocity, one-pass airflow, and total volume air change
- Shares Optimice caging and accessories
- Available in three capacities: 50-, 70-, and 80-cage



Ergomice 50-Cage

Ergomice 50-Cage Racks

Ergomice Bare Rack Assembly Only

No cages.

Product: C77250

Ergomice Full Rack Assembly

Cages included.

Product: C89150 M/P/S

Ergomice 50-Cage Rack Options

External Water Bags*


Replaces standard cage tops with external water bag tops and omits the bottle assemblies.

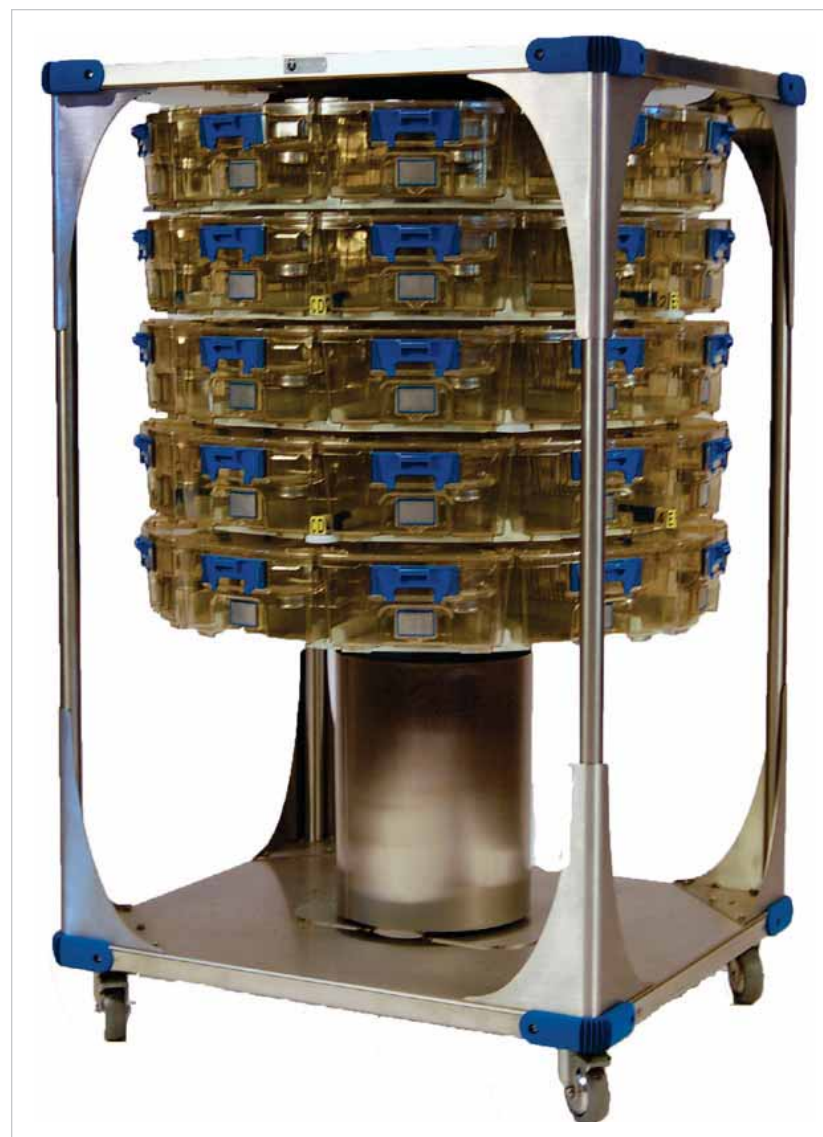
Product: C78025 MH/PH/SH

External Water Bottles

Replaces standard cage tops with external bottle top and C79123 M/P/S bottle assembly.

Product: C78025 MB/PB/SB

	Ergomice 50 Dimensions <i>Inches (cm)</i>		
	Depth	Width	Height
With cages	40.5 (102.9)	40.5 (102.9)	63.9 (162.3)
Without cages	33.8 (85.6)	39.8 (101.1)	



Ergomice 70-Cage

Ergomice 70-Cage Racks

Ergomice Bare Rack Assembly Only

No cages.

Product: C77270

Ergomice Full Rack Assembly

Cages included.

Product: C89170 M/P/S

Ergomice 70-Cage Rack Options

External Water Bags*


Replaces standard cage tops with external water bag tops and omits the bottle assemblies.

Product: C78027 MH/PH/SH

External Water Bottles

Replaces standard cage tops with external bottle top and C79123 M/P/S bottle assembly.

Product: C78027 MB/PB/SB

	Ergomice 70 Dimensions <i>Inches (cm)</i>		
	Depth	Width	Height
<i>With cages</i>	40.5 (102.9)	40.5 (102.9)	77.1 (195.8)
<i>Without cages</i>	33.8 (85.6)	39.8 (101.1)	



NOTE: M/P/S refers to plastic type/color: M-Polycarbonate, P-Amber Polysulfone, S-Smoke Polysulfone

[Back to Table of Contents](#)

Ergomice 80-Cage

Ergomice 80-Cage Racks

Ergomice Bare Rack Assembly Only

No cages.

Product: C77280

Ergomice Full Rack Assembly

Cages included.

Product: C89180 M/P/S

Ergomice 80-Cage Rack Options

External Water Bags*


Replaces standard cage tops with external water bag tops and omits the bottle assemblies.

Product: C78028 MH/PH/SH

External Water Bottles

Replaces standard cage tops with external bottle top and C79123 M/P/S bottle assembly.

Product: C78028 MB/PB/SB

	Ergomice 80 Dimensions		
	Inches (cm)		
	Depth	Width	Height
With cages	40.5 (102.9)	40.5 (102.9)	63.9 (162.3)
Without cages	33.8 (85.6)	39.8 (101.1)	



Transport Boxes

Animal Care Systems offers ground transport boxes for shipping your research rodents safely and conveniently. These containers are sturdier than cardboard boxes, ship flat, and are economical. Each box can be easily divided and all lids are equipped with a viewing window. For sales outside North America, please contact [Triple A Trading](#).

Features:

- Made from 3-mm white polypropylene Akylux
- Durable, lightweight, reusable, recyclable
- Washable and sterilizable at 121 degrees Celsius (250 F) for 20 minutes
- Easily divide boxes into 2 or 4 compartments
- Filters are protected from animals by a fine wire mesh
- Window flap for easy inspection of animals
- Opaque plastic protects animals from bright light and being viewed in public spaces
- Ships flat, saving on transport costs
- Easy to fold and assemble — no staples or tape needed

Filter Media

Cooltexx 2693, 70 g/m²

Large Box for Rats or Mice

Maximum floor space = 200 square inches (1290 square centimeters)

Dividable into 2 or 4 compartments

Small box for Mice

Maximum floor space = 100 square inches (645 square centimeters)

Dividable into 2 compartments

Small Transport Box

For rodents. Comes with base divider.
Pack of 20.

Product: TPB010

Large Transport Box


For rodents. Comes with base divider.
Pack of 20.

Product: TPB020

Large Transport Box Divider

For further division of large box (into quadrants). Pack of 20.

Product: TPBD020

	Transport Box Assembled Dimensions <i>Inches (cm)</i>		
	Length	Width	Height
<i>Small box</i>	11.8 (30)	8.5 (21.5)	6.3 (16)
<i>Large box</i>	16.9 (43)	11.8 (30)	6.3 (16)



Optirat® Plus

Our Largest, Most Advanced Cages

Optirat Plus combines our proven motor-free, exhaust-ventilated technology and high-density carousel design with vastly increased cage volume while improving ease of use and maintenance. The feeder is located near the rear of the cage for improved visibility, and the water bottles are externally located to allow changing without opening cages. Optirat Plus racks each contain 30 cages, arrayed in six levels of five cages per level, and each cage is equipped with a 1.1-liter feeder and two 500-mL water bottles or optional water bag adapters; auto-watering is also available.

As with all Animal Care Systems racks, Optirat Plus meets domestic and international housing recommendations and exceeds animal comfort guidelines while providing high-density caging for rats. Like our other carousel-style racks, Optirat Plus can be positioned against a wall or next to another rack. The rotating carousel provides easy cage access without moving racks or forming large aisles. Simply stand in one place and bring the cages to you. Optirat Plus also can house hamsters, gerbils, guinea pigs, deer mice, and wild-caught rodents. The cage is suitable for invertebrates, as well.

Caging Accessories

We offer a full range of standard and custom accessories designed to optimize our caging systems and maximize the efficacy of lab animal research.

Optirat Plus features


- Ultra-large cages; improved height and floor area
- Optional mezzanine further expands living space
- Externally accessible water bottles
- Inexpensive replacement filters
- Flat-bottom cage bases
- Integrated cage card holder

Same operating principles as all Animal Care Systems racks

- One-pass, low-velocity airflow with total volume air changes
- No electric motors, no energy consumption, no vibration
- Simple cage assemblies with as few as three component parts
- Complete biological isolation and containment

Optional automatic watering options

- Valve-on-cage (VOC)
- Valve-on-rack (VOR)
- Removable valve-on-rack (RVOR)

	Optirat Plus Rack					
	Dimensions <i>Inches (mm)</i>				Weight <i>Pounds (kg)</i>	
	Depth	Width	Height	Auto-Water Height	Basic	Auto-Water
Full rack, carousel rotation	41 (1041)	41 (1041)	78 (1981)	79.5 (2019)	503 (228)	500 (227)
Full rack, carousel rotated for precise entryways	39.4 (1000)	39.7 (1008)			503 (228)	500 (227)
Empty rack	33.7 (856)	39.7 (1008)			269 (122)	284 (129)



Optirat Plus

Basic Optirat Plus Racks

Water bottles or water bags.

Bare Rack Assembly

No cages.

Product: CP77R100

Full Rack Assembly With Water Bottles

Complete cage assemblies included.

Product: CP86100 M/P

Full Rack Assembly For Use With Water Bags

No water bottles. Includes stainless steel water bag valve, P/N CP45Q100.
Includes water bag adapter, P/N CP43T110.

Product: CP86101 M/P



Optirat Plus

Rack options may be ordered only with rack assemblies.

Optirat Plus Bare Rack Assemblies

No cages.

With Rack-Mounted Edstrom Valves

Compatible with CP79C202 M/P Optirat Plus auto-water cages.

Product: CP77R202

Removable Valve Option

Add to above rack to change valves to removable type.

Option: CP75R120

Ready For Cage-Mounted Edstrom Valves

Compatible with CP79C200 M/P Optirat Plus VOC auto-water cages. Valves not included with rack.

Product: CP77R200

Ready For Cage-Mounted SE Lab Group Valves

Compatible with CP79C205 M/P Optirat Plus VOC auto-water cages. Valves not included with rack.

Product: CP77R205

With Auto-Water, No Valves or Valve Couplings*

Cage compatibility depends on valve selection.

Product: CP77R20

Optirat Plus Full Rack Assemblies

Cages included.

With Rack-Mounted Edstrom Valves

Includes CP79C202 M/P Optirat Plus auto-water cages.

Product: CP86202 M/P

Edstrom Removable Valve Option

Add to above rack (CP86202 M/P) to change valves to removable type. Includes CP79C202 M/P Optirat Plus auto-water cages.

Option: CP75R120

With Rack-Mounted SE Lab Group Valves

Includes CP79C202P Optirat Plus auto-water cages.

Product: CP86207P

SE Lab Removable Valve Option

Add to above rack (CP86207P) to change valves to removable type. Includes CP79C202P Optirat Plus auto-water cages.

Product: CP79R122

With Cage-Mounted Edstrom Valves

Includes CP79C200 M/P Optirat Plus VOC auto-water cages.

Product: CP86200 M/P

With Cage-Mounted SE Lab Group Valves

Includes CP79C205 M/P Optirat Plus VOC auto-water cages.

Product: CP86205 M/P

* Rack is plumbed for auto-water; however, valves must be acquired and installed before the auto-water system can be used.

NOTE: M/P refers to plastic type/color: M-Polycarbonate, P-Amber Polysulfone; polycarbonate orders must meet minimum quantities

[Back to Table of Contents](#)



Optirat Plus

Basic With External Water Bottle

Standard Cage Assembly

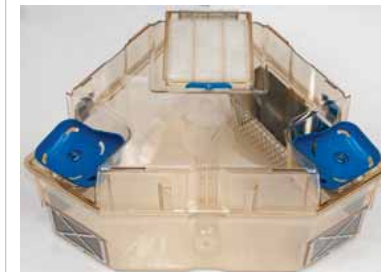
Product: CP79C100 M/P



Basic, External Water Bag Ready

Includes stainless steel water bag valves, P/N CP45Q100, and water bag adapters, P/N CP43T110.

Product: CP79C101 M/P

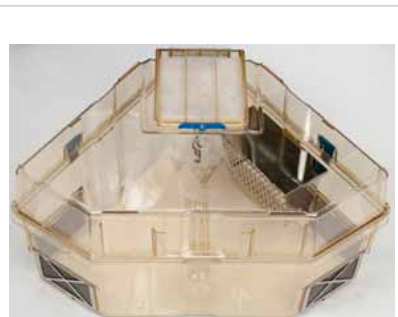


Auto-Water Cage Assemblies

Utilize different cage tops with no bottle recesses and provide extra headroom at the front corners.

With Cage-Mounted Valves

SE Lab Valve:
CP79C205 M/P
Edstrom Valve:
CP79C200 M/P



Cannula Cage Assembly

A special trough feeder and angled sipper tubes minimize the risk of damage to head implants.

Product: CP79C102 M/P



Accommodates Rack-Mounted Valves

Product: CP79C202 M/P

Optirat Plus

Basic Cage Base Assembly

Standard cage base for use with water bottles or bags.

Product: CP79B100 M/P



Auto-Water Cage Base Assembly, Rack-Mounted Valve

Spring-loaded door accommodates fixed and removable rack-mounted valves.

Product: CP79B202 M/P



Auto-Water Cage Base Assembly, Cage-Mounted Valve

Cage bases can be sold with or without watering valves installed.

With SE Lab Group Valve:

CP79B205 M/P

With Edstrom Valve:

CP79B200 M/P

Base Without Valve:

CP79B210 M/P



Cage-Mounted Watering Valves

For use with CP79B210 cage bases.

Edstrom: M45050

SE Lab: C45021

Optirat Plus

Basic Cage Top Assembly For Water Bottles/Bags

Does not include bottles or water bag adapters.

Product: CP79T100 M/P



Auto-Water Cage Top Assembly

No recesses for bottles or water bags.

Product: CP79T200 M/P



Manual Port Cage Top

Equipped with a spring-loaded manual feed port.

Optirat Plus Single Feed Port Standard Top (Shown)

Product: CP79T105 M/P

Optirat Plus Dual Feed Port Standard Top

Product: CP79T106 M/P

Optirat Plus Single Feed Port Auto-Water Top

Product: CP79T205 M/P

Optirat Plus Dual Feed Port Auto-Water Top

Product: CP79T206 M/P



Optirat Plus Cage Top Clip

Sold individually.

Product: CP43T010



Optirat Plus

Filter Media—Reemay 2024

Front Filter

Small, four per cage.

Product: CP43L101



Rear Filter

Large, one per cage.

Product: CP43L102



Rear Screen Clip

Product: CP40L106



Outer Filter Screens

Front Outer Filter Screen

Product: CP40L102



Rear Outer Filter Screen

Product: CP40L105



Optirat Plus

Inner Filter Screens

Front Inner Filter Screen

Product: CP40L101



Rear Inner Filter Screen

Product: CP40L104



Front Filter Retainer

Product: CP40L103



Optirat Plus Rear Filter Cover

Product: CP43T050 M/P



Rear Filter Cover Latch

Product: CP43T011



Optirat Plus

Optirat Plus Water Bottle Assembly

Cap has integrated stainless steel sipper tube that extends down into the cage.

Capacity: 500 mL

Product: CP79W100 M/P

Without Cap: CP79W110 M/P

Cap Only: CP79W050R

Seal Only: C41050



Optirat Plus Water Bag Adapter

Installs in the cage top recesses to allow the use of water bags.

Product: CP43T110



Optirat Plus Caps for Additional Species

The bottle cap supplies facilities with options for mice, guinea pigs, and other rodents.

Mice (shown): CP79W051R

Guinea Pigs: CP79W053R



Optirat Plus Water Bag Drinking Valve

Constructed from stainless steel; length provides access to bagged water in Optirat Plus applications.

Product: CP45Q100



Watering Valves, Rack-Mount Removable

Valve: C45027A

Air Seal: C45160



Watering Valves, Cage-Mount

Edstrom: M45050

SE Lab: C45021

Cannula Rat Bottle Cap

Angled sipper tube used for rodents with head implants. Provides ample head space clearance for implants when drinking.

Product: CP79W052R



Optirat Plus

Optirat Plus Feeder Assembly

Hinged cover keeps animals out of the feeder.

Capacity: 1,100 cubic centimeters (67 cubic inches)

Product: CP40F105

Feeder only (no cover)

Product: CP40F100

Feeder Cover

Product: CP40F050



Cannula Rat Feeder

Trough feeder minimizes damage to head implants.

Capacity: 400 cubic centimeters (24 cubic inches)

Product: CP40F112



Optirat Plus Small J-Feeder

For powdered or small-pellet feed.

Capacity: 400 cubic centimeters (24 cubic inches)

Product: CP40F113



Optirat Plus J-Feeder

For powdered or small-pellet feed.

Product: CP40F115



Optirat Plus

Optirat Plus Mezzanine

Expand internal floor area by 33 percent. Material: polycarbonate.

Product: CP79A102M



Optirat Plus Cage Divider for Mezzanine Kit

Divide living quarters and food access with a mezzanine for increased floor area.

Product: CP79A105MF



Optirat Plus Tox Floor

Stamped from flat sheet. More gentle on feet.

Product: CP40B171



Feeder Only

Product: M40022OR

Standard Divider Only

Product: CP79A110

Divider for Mezzanine Only

Compatible only with a CP79A102MD

Product: CP79A113M

Social Holes: CP79A111.6

Mezzanine for Divider Only

Compatible only with a CP79A113M

Product: CP79A102MD

Optirat Plus Standard Cage Divider and Feeder

Divide living quarters and food access. Provide visual and auditory contact with conspecifics.

Standard: CP79A110F

Social Holes: CP79A111



*All rat dividers not compatible with auto-water cages

[Back to Table of Contents](#)

Optirat Plus

Optirat Plus Water Bottle Basket, 15-Bottle

Hinged lid and clip secure bottles for washing

Product: CP61A100



Optirat Plus Water Bottle Basket, 20-Bottle

Hinged lid and clip secure bottles for washing

Product: CP61A101



Cage Cards

3-by-5-inch — five colors available

Product: M52010



Optirat® GenII


The Optirat GenII caging system is built on the same structural frame as Optimice and employs the same motor-free, exhaust ventilated technology as all Animal Care Systems racks. The cages are large enough to comfortably accommodate rats and provide superior visibility, thanks to the wide front face.

Each rack contains 42 cages, arrayed in seven levels with six cages per level. Each cage is equipped with two standard Optimice 400-mL water bottles and a 1.1-liter stainless steel feeder. Cages are available in the same plastic options as all standard Animal Care Systems cages: amber polysulfone and clear polycarbonate.

Like our other carousel-style racks, Optirat GenII can be positioned against a wall or next to another rack. The rotating carousel provides easy cage access without moving racks or forming large aisles. Simply stand in one place, and bring the cages to you. Optirat GenII also can house hamsters, gerbils, guinea pigs, deer mice, and wild-caught rodents. The cage is suitable for invertebrates, as well.

Caging Accessories

We offer a full range of standard and custom accessories designed to optimize our caging systems and maximize the efficacy of lab animal research.

	Optirat GenII Rack					
	Dimensions <i>Inches (mm)</i>				Weight <i>Pounds (kg)</i>	
	Width	Depth	Height	Auto-Water Height	Basic	Auto-Water
Full rack	39.7 (1008)	39.4 (1001)	76.5 (1943)	78 (1981)	534 (242)	524 (238)
Empty rack	39.7 (1008)	33.7 (856)			311 (141)	296 (134)

Optirat GenII features

- Ultra-high density
- Simple and lightweight
- Fast and easy cage filter replacement
- Large enough to house rats and other large rodents
- Integrated cage card holder

Same operating principles as all Animal Care Systems racks

- One-pass, low-velocity airflow and total volume air changes
- No electric motors, no energy consumption, no vibration
- Complete biological isolation and containment

Optional automatic watering options

- Valve-on-cage (VOC)
- Valve-on-rack (VOR)
- Removable valve-on-rack (RVOR)



Optirat GenII

Bare Rack Assembly

No cages.

Product: C76200

Standard Full Rack Assembly, Water Bottles

Complete cage assemblies included.

Product: C87100 M/P

Standard Full Rack Assembly, Water Bags

Remove bottle assemblies and replace with one internal water bag holder.

Product: C74R010 M/P



Optirat GenII

Optirat GenII Bare Rack Assemblies

No cages.

With Rack-Mounted Edstrom Valves

Compatible with C79502 M/P Optirat GenII auto-water cages.

Product: C76202

Removable Valve Option

Add to above rack to change valves to removable type.

Option: C75120

Ready For Cage-Mounted Edstrom Valves

Compatible with C79501 M/P Optirat GenII VOC auto-water cages. Valves not included with rack.

Product: C76201

Ready For Cage-Mounted SE Lab Group Valves

Compatible with C79505 M/P Optirat GenII VOC auto-water cages. Valves not included with rack.

Product: C76205

With Auto-Water, No Valves or Valve Couplings*

Cage compatibility depends on valve selection.

Product: C76601

Optirat GenII Full Rack Assemblies

Cages included.

With Rack-Mounted Edstrom Valves

Includes C79502 M/P Optirat GenII auto-water cages.

Product: C87202 M/P

Removable Valve Option

Add to above rack to change valves to removable type.

Option: C75120

With Cage-Mounted Edstrom Valves

Includes C79501 M/P Optirat GenII VOC auto-water cages.

Product: C87200 M/P

With Cage-Mounted SE Lab Group Valves

Includes C79505 M/P Optirat GenII VOC auto-water cages.

Product: C87205 M/P

* Rack is plumbed for auto-water; however, valves/valve couplings must be acquired and installed before the auto-water system can be used.

Optirat GenII

Basic With Internal Water Bottle

Standard cage assembly.

Product: C83500 M/P



Basic with Internal Water Bag

Remove bottle assembly and replace with internal water bag holder.

Product: C74C010 M/P



Auto-Water Cage Assemblies

No bottles or water bag holders.

With Cage-Mounted Valves

SE Lab Valve: C83505 M/P

Edstrom Valve: C83501 M/P

Accommodates Rack-Mounted Valves

Product: C83502 M/P

Add Manual Feed Port to Cage Assembly

Replaces standard cage top with one equipped with a spring-loaded manual feed port.

Product: C75230 M/P

Replace Standard Feeder With Bottom-protected Version

Protect food at the bottom of the feeder with the restrictor plate feeder.

Product: C75402



Optirat GenII

Basic Cage Base Assembly

For use with water bottles or bags. Includes filters.

Product: C83510 M/P



Auto-Water Cage Base Assembly, Cage-Mounted Valve

Watering valve not included with cage base. Valve type must be matched to rack.

Product: C83511 M/P

Compatible Valves

Edstrom: M45050

SE Lab: C45021

Auto-Water Cage Base Assembly, Rack-Mounted Valve

Spring-loaded door accommodates fixed and removable rack-mounted valves.

Product: C83512 M/P

Optirat GenII Auto-Water Pre-Charge Station

Purge trapped air from cage-mounted valves before use.

Edstrom Product: C83361

SE Lab Product: C83366

Optirat GenII Cage Base Skid

Placed at the bottom of a stack of cages, the cage skid enables effortless sliding across floor or other surfaces.

Product: C83391

NOTE: M/P refers to plastic type/color: M-Polycarbonate, P-Amber Polysulfone

[Back to Table of Contents](#)



Optirat GenII

Standard Cage Top Assembly

Product: C79520 M/P



Manual Feed Port Cage Top

Equipped with a spring-loaded manual feed port.

Product: C79522 M/P



Optirat GenII Cage Top Clip*

Replacement latching clips; sold individually.

Product: C43320



Wire Bar Cage Top Assembly

Converts a standard cage to conventional mode. Do not use on cages installed in Optirat GenII rack.

Product: C79525



* Replacement mounting screws, C30120, are available if needed

NOTE: M/P refers to plastic type/color: M-Polycarbonate, P-Amber Polysulfone

[Back to Table of Contents](#)

Optirat GenII

Standard Bottle Assembly

Includes hanger, seal, and cap.

Capacity: 400 mL

Product: C79122 M/P

Bottle without cap

Product: C79132 M/P



Black Bottle Assembly

Available in polysulfone only. Includes hanger, seal, and cap.

Capacity: 400 mL

Product: C79122PBLK

Bottle without cap

Product: C79132PBLK



Red Bottle Assembly

Available in polysulfone only. Includes hanger, seal, and cap.

Capacity: 400 mL

Product: C79122PRED

Bottle without cap

Product: C79132PRED



Internal Water Bag Holder

For Hydropac *only*.

Product: C79585



Water Bottle Guard

Compatible only with Optirat GenII.

Product: C40406



Optirat GenII

Bottle Seal

Product: C41050



Bottle Hanger

Product: C40320



* For those intending to use Sipper Sac water bags, add valve adapter C45434 to this option

NOTE: M/P/S refers to plastic type/color: M-Polycarbonate, P-Amber Polysulfone, S-Smoke Polysulfone

[Back to Table of Contents](#)

Optirat GenII

Standard Internal Bottle Cap

Product: C40150



Ball Sipper Tube Bottle Cap

Ball provides a better seal with fewer incidental drips.

Product: C40153



Watering Valves, Rack-Mount Removable

Valve: C45027A

Air Seal: C45160

Watering Valves, Cage-Mount

Edstrom: M45050

SE Lab: C45021



Curved Sipper Tube Bottle Cap

For guinea pigs.

Product: C40151



Bottle Cap with 1.5-inch Sipper Tube

Provides mouse pups or less mobile rodents with a lower, more easily accessed sipper tube.

Product: C40154



Water Cap Valve Assembly

For use with cage-mounted valves only

Product: M45080A



Edstrom Auto-Water Deprivation Cap

Product: M45055



Optirat GenII

Rear Filter Nozzle

Product: C43430



Rear Filter Reemay

Product: C43L002



Rear Filter Inner Screen

Product: C404S040



Rear Filter Outer Screen

Product: C404S041



Rear Outer Screen Wire Retainer

Product: C404SR01



Optirat GenII

Front Filter Retainer

Product: C43440



Front Filter Reemay

Product: C43L001



Front Filter Inner Screen

Product: C40L101



Front Filter Outer Screen

Product: C404S016



Optirat GenII

Optirat GenII Standard Feeder

All stainless. Option to hang one bottle at two different heights.

Capacity: 1,100 cubic centimeters (67 cubic inches)

Product: C40401



Optirat GenII Standard Feeder with Restrictor Plate

Protect food at the bottom of the feeder with the restrictor plate feeder.

Capacity: 1,100 cubic centimeters (67 cubic inches)

Product: C40402



Optirat GenII J-Feeder

For powdered and small-pellet feed. Can be used for guinea pig feed.

Capacity: 1,000 cubic centimeters (67 cubic inches)

Product: C40405



Optirat GenII Cannula Feeder and Water Bottle Assembly

A special trough feeder and water bottle that minimizes the risk of damage to head implants.

Bottle capacity: 500 mL

Feed capacity: 400 cubic centimeters (24 cubic inches)

Product: C79586 M/P

Feeder Housing Only

Product: C40408

Water Bottle Only

Product: CP79W103M



Optirat GenII

Optirat GenII Standard Cage Divider and Feeder

Divide living quarters and food access. Provide visual and auditory contact with conspecifics.

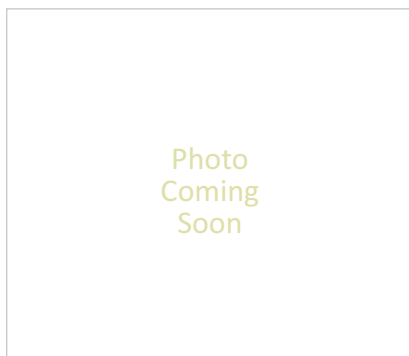
Product: C83175M



Optirat GenII Cage Divider with Social Holes and Feeder

Holes in divider allow olfactory and tactile contact.

Product: C83176M



Feeder Only

Product: M40022OR

Standard Divider Only

Product: C43117

Standard Divider with Social Holes

Product: C43118

Optirat GenII

Optirat GenII Standard Tox Floor

Stamped from flat sheet, more gentle on feet.

Product: C40175



Optirat GenII Wire Bar Tox Floor

Large openings for thorough waste isolation.

Product: C40176



Optirat GenII Upright Shelf

Allows quick access to cages for immediate cage checks; shelf height modular.

Product: C79386



Optirat®

Optirat cage lids, feeders, water bottles, and most other accessories are compatible with Optirat GenII. Additionally, the Optirat rack is compatible with Optirat GenII cage assemblies.

Please contact Animal Care Systems about Optirat parts, which will be available until remaining inventory is depleted.



The original M.I.C.E. system is a modular, high-density vented caging system for healthy housing of rodents. These systems are available in a wide variety of sizes, from the smallest 14-cage system, ideal for small studies and experiments, to large 140-cage racks suitable for installation in medium-to-large animal rooms. Each size of rack is based on multiples of the 14-cage module. M.I.C.E. caging systems are sold in both single-sided and double-sided versions.

The M.I.C.E. system is the only rodent caging system in the world validated for Microenvironmental comfort, Isolation, Containment, and Enrichment (M.I.C.E.). The M.I.C.E. rack is vented using a building's HVAC exhaust system, with a natural convective assist from the populated cages themselves. With no blowers, it is appropriate and safe even in case of power failure — a unique feature that separates the vented M.I.C.E. system from electrically powered and blower-ventilated racks.



M.I.C.E. Dimensions			
Inches (cm)			
	Length	Depth	Height (basic and auto-water)
Rack Type			
S1	16.25 (41.3)	23.25 (59.1)	77 (195.6)
S2	32.5 (82.6)		
S3	48.75 (123.8)		
S4	65 (165.1)		
S5	81.25 (206.4)		
D4	32.5 (82.6)	36.5 (92.7)	
D6	48.75 (123.8)		
D8	65 (165.1)		
D10	81.25 (206.4)		

Single-Sided Racks

Cages not included.

M.I.C.E. 1-Module Rack (S1)

14 mouse (7 rat) cage stations.

Product: M40200S1

M.I.C.E. 2-Module Rack (S2)

28 mouse (14 rat) cage stations.

Product: M40200S2

M.I.C.E. 3-Module Rack (S3)

42 mouse (21 rat) cage stations.

Product: M40200S3

M.I.C.E. 4-Module Rack (S4)

56 mouse (28 rat) cage stations.

Product: M40200S4

M.I.C.E. 5-Module Rack (S5)

70 mouse (35 rat) cage stations.

Product: M40200S5

Double-Sided Racks

Cages not included.

M.I.C.E. 4-Module Rack (D4)

56 mouse (28 rat) cage stations.

Product: M40200D4

M.I.C.E. 6-Module Rack (D6)

84 mouse (42 rat) cage stations.

Product: M40200D6

M.I.C.E. 8-Module Rack (D8)

112 mouse (56 rat) cage stations.

Product: M40200D8

M.I.C.E. 10-Module Rack (D10)

140 mouse (70 rat) cage stations.

Product: M40200D10

Single-Sided Racks

Configured with mouse cages.

M.I.C.E. 1-Module Rack (S1)

14 mouse cages. Auto-water not available.

Product: M/P 85010S1

M.I.C.E. 2-Module Rack (S2)

28 mouse cages.

Product: M/P 85010S2

Add Auto-Water Option: M45010S2A

M.I.C.E. 3-Module Rack (S3)

42 mouse cages.

Product: M/P 85010S3

Add Auto-Water Option: M45010S3A

M.I.C.E. 4-Module Rack (S4)

56 mouse cages.

Product: M/P 85010S4

Add Auto-Water Option: M45010S4A

M.I.C.E. 5-Module Rack (S5)

70 mouse cages.

Product: M/P 85010S5

Add Auto-Water Option: M45010S5A

Double-Sided Racks

Configured with mouse cages.

M.I.C.E. 4-Module Rack (D4)

56 mouse cages.

Product: M/P 85015D4

Add Auto-Water Option: M45010D4A

M.I.C.E. 6-Module Rack (D6)

84 mouse cages.

Product: M/P 85015D6

Add Auto-Water Option: M45010D6A

M.I.C.E. 8-Module Rack (D8)

112 mouse cages.

Product: M/P 85015D8

Add Auto-Water Option: M45010D8A

M.I.C.E. 10-Module Rack (D10)

140 mouse cages.

Product: M/P 85015D10

Add Auto-Water Option: M45010D10A

Single-Sided Racks

Configured with rat cages.

M.I.C.E. 1-Module Rack (S1)

7 rat cages. Auto-water not available.

Product: M/P 85011S1

M.I.C.E. 2-Module Rack (S2)

14 rat cages.

Product: M/P 85011S2

Add Auto-Water Option: M45011S2A

M.I.C.E. 3-Module Rack (S3)

21 rat cages.

Product: M/P 85011S3

Add Auto-Water Option: M45011S3A

M.I.C.E. 4-Module Rack (S4)

28 rat cages.

Product: M/P 85011S4

Add Auto-Water Option: M45011S4A

M.I.C.E. 5-Module Rack (S5)

35 rat cages.

Product: M/P 85011S5

Add Auto-Water Option: M45011S5A

Double-Sided Racks

Configured with rat cages.

M.I.C.E. 4-Module Rack (D4)

28 rat cages.

Product: M/P 85016D4

Add Auto-Water Option: M45011D4A

M.I.C.E. 6-Module Rack (D6)

42 rat cages.

Product: M/P 85016D6

Add Auto-Water Option: M45011D6A

M.I.C.E. 8-Module Rack (D8)

56 rat cages.

Product: M/P 85016D8

Add Auto-Water Option: M45011D8A

M.I.C.E. 10-Module Rack (D10)

70 rat cages.

Product: M/P 85016D10

Add Auto-Water Option: M45011D10A

Mouse Cage Assemblies

Type refers to the bottle to cage top interface.

Type 2 Mouse Cage Assembly

Product: M/P 80100A

Type 2 Auto-Water Mouse Cage Assembly

Product: M/P 80110A



Rat Cage Assemblies

Basic rat cage assembly (shown).

Product: M/P 80121

Auto-Water Rat Cage Assembly

Product: M/P 80131



Cage Bases

Mouse Cage Base Assembly

For use with water bottles.

Product: M/P 79010

Mouse Auto-Water Cage Base Assembly

Includes water valve.

Product: M/P 79011

Mouse Auto-Water Cage Base Assembly

No water valve included.

Product: M/P 79012

Exhaust Nozzle

Compatible with all M.I.C.E. cages.

Product: M/P 43060

Inhalation Nozzle Assembly

Allows for controlled introduction of various gas compounds.

Product: M43090



Cage Tops

Water bottles sold separately.

Type 2 Mouse Cage Top

Assembly: M/P 79021

Without Feeder/Cover:
M/P 43021



Feeder Cover

Product: M/P 43051



M.I.C.E. Cage Clips

Product: M43080



Rat Cage Base Assembly

For use with water bottles.

Product: M/P 79121



Rat Cage Top (Type 2)

Product: M/P 43026



Rat Auto-Water Cage Base Assembly

Includes water valve.

Product: M/P 79126

Rat Auto-Water Cage Base Assembly

No water valve included.

Product: M/P 79127

Sipper Tube Closure

Close the sipper tube port on cage tops when auto-water is employed instead of bottles. Accommodates Type 2 cage tops.

Product: M79280

M.I.C.E. Filter Media — Reemay 2024

Product: M40040



Inner Filter Screen, 40-Mesh

Mouse: M40050

Rat: M40052



Filter Retaining Clip

Outside, front filter only. One per filter with mouse. Two per filter with rat.

Product: M40130



Outer Filter Screen, 16-Mesh

Same part used in mouse or rat cages.

Product: M40060



Standard Bottle, Type-2

Product: MR/PR 79030B

Bottle without cap

Product: M/P 79031A



Rat Cage Bottle Assemblies

Standard Bottle

Type 2 interface.

Product: MR/PR 79038

Bottle without cap

Product: M/P 79037



Black Bottle, Type 2

Product: P79101

Black Bottle without cap

Product: P79031BLK

Black Bottle without cap and seal

Product: P51011BLK



Bottle Assembly With Short Sipper Tube

Equipped with shorter 2.5-inch tube.
Type 2 interface.

Product: MR/PR 79038A



Standard Mouse Cage Feeder

All stainless wire construction.

Capacity: 930 cubic centimeters (57 cubic inches)

Product: M40022C



Standard Rat Cage Feeder

Compatible with rat cages only.

Capacity: 1,000 cubic centimeters (61 cubic inches)

Product: M40026B



Rat Cage J-Feeder

For guinea pigs. Compatible with rat cages only.

Capacity: 1,000 cubic centimeters (61 cubic inches)

Product: M40028



Plenum Top Cover Assemblies

For Single-Sided Racks

Product: M79060

For Double-Sided Racks

Product: M79070



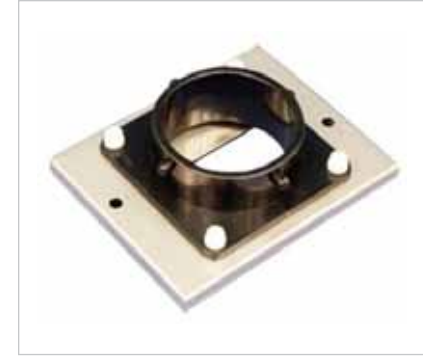
Manifold Assemblies

For Single-Sided Racks

Product: M79080

For Double-Sided Racks

Product: M79090



M.I.C.E. Cage Shelf

Product: M40300A



Rack Side Handle

Product: M40250A



Plenum Module Plug

Product: M41020



Top Cover Gasket

Product: M41030



Mouse Cage Tox Floor

Isolates waste by allowing it to drop below.

Product: M40010

With Larger Openings

Product: M40011



Rat Cage Tox Floor

Fit for rat cages.

Product: M40012



Filter Chew Guard Kit

Includes guard, filter, screen, and nut.

Mouse Type: M79140

Rat Type: M79145



Rat Bottle Washing Basket

Designed for the larger rat bottles.

Product: M61012

Rat Bottle Basket Cover

Product: M48101



Mouse Bottle Washing Basket

Secure bottles when washing or sterilizing.

Product: M61011



Material Handling

Accessory Basket

For use with assorted accessories when washing or sterilizing.

Product: C61040



Cage Top Washing Racks

Accommodates all Optimice and Optirat cage tops; bottle/bag washing rack is required for external water tops.

Standard (pictured): C61020

Capacity: 20 lids

Bottle/Bag: C61022

Capacity: 18 lids

Stackable (pictured): C61023

Capacity: 19 lids



Cage Bulk Cart

Safely transport or store large quantities of cages. Includes restraint cable.

Product: C79345

Bulk Cart Covers

Sterilizable cover to keep dust and debris from collecting on stored cages.

With zipper: C49160

With Velcro: C49161

Spare Restraint Cable

Product: C49150

Opticart

Effortlessly transport water bag totes, bottle baskets, and much more.

Product: C79340



Material Handling

Optimice and Optirat GenII Water Bottle Basket, 15-Bottle

Compatible with Optirat and Optimice bottles. Hinged lid and clip secure bottles for washing.

Product: C61011

With Detachable Lid

Product: C61012



Protective Cover

Protective cover for 15-bottle basket.

Product: C49COV35Z



Optimice and Optirat GenII Water Bottle Basket, 20-Bottle

Compatible with Optirat and Optimice bottles. Hinged lid and clip secure bottles for washing.

Product: C61010

Protective Cover

Protective cover for 20-bottle basket.

Product: C49COV45Z



Bottle Cap Removal Tool

Ergonomic bottle cap remover for Optimice, Optirat, and Optirat GenII

Product: C79190



Material Handling



Change-Out Rack for Optimice

Store, transport, wash, and sterilize Optimice cages and accessories on this durable stainless steel rack.

Option 1

Two Optimice cage shelves and one accessory shelf

Product: C79347A

Option 2

Three Optimice cage shelves (shown)

Product: C79347B

Option 3

Five Optimice cage shelves

Product: C79347C

Option 4

Two Optimice cage shelves

Product: C79347D

Option 5

Two accessory shelves

Product: C79347E

Option 6

Three accessory shelves

Product: C79347F

Option 7

Four Optimice cage shelves and one accessory shelf

Product: C79347G

Individual Parts

Change-out rack base: C79346

Optimice cage shelf: C50051

Accessory shelf: C50052



Change-Out Rack for Optirat GenII and Optirat Plus

Rack base and shelves are ordered a la carte for greatest flexibility; shipped assembled. Between one and three shelves per base are recommended.

Change-Out Rack Base: C79346

Rack Assembly with Two Shelves: C79347E (shown)

Rack Assembly with Three Shelves: C79347F

Accessory Shelf: C50052

Protective Cover

Protective cover for change-out rack.

Product: C49164

New Photo
Coming Soon



Rack Accessories

Anemometer Assembly Kit

Ensure adequate air velocity to assist in rack installation.

Product: M79211



Iris 100 Damper

4-inch: M49D100

6-inch: M49D150



Rack Status Monitor Kit

Install on existing rack for continuous airflow monitoring.

Product: C79355



Individual Parts

Display Unit: C79355DU

Sensor Tubes Unit: C79355ST



Fail Safe Fan

Provide emergency ventilation in the event of extended HVAC failure.

Product: C80011



Rack Accessories

Opti Rack Light Kit, Frosted Lens

Provides even, orthogonal lighting across the full height of a rack with no need to light an entire room. Powered by rechargeable battery or AC adapter. Compatible with Optimice, Optirat, Optirat GenII, and Optirat Plus

Battery Version: C80050FRS
AC Adapter Version:
C80051FRS

Red Cover Lens:

Attaches to light bar to produce red light.

Product: C43801RED



Vibration Isolator Pads

Place one pad beneath each of the rack's casters to drastically reduce transmitted vibration from construction or large equipment. Two per package.

Product: C49200



Rack Exterior Spacers

The side and rear spacers automates rack spacing.

Rear Spacer: C89SPACER1

Side Spacer: C89SPACER2



Opti Rack Cover

Protective cover for carousel racks.

Product: C49163



Venting & Ducting

V-Duct Box Assembly

Available with 4- or 6-inch connection.

4-inch Product: M79V42

6-inch Product: M79V62



Universal Exhaust Box Assembly

4-inch Product: M79244

6-inch Product: M79264



V-Duct Box with Iris Damper Assembly

Available with 4- or 6-inch connection.

4-inch Product: M79V42D

6-inch Product: M79V62D



Universal Exhaust Box with Iris Damper Assembly

4-inch Product: M79244D

6-inch Product: M79264D



Ceiling Drop Assembly

Connect a single exhaust hose to a 4- or 6-inch ceiling drop.

4-inch Product: M79230

6-inch Product: M79235



Y-Duct Assembly

4-inch Product: M79240

6-inch Product: M79245

Exhaust Adapter Plate

The adapter plate is custom-designed to fit your ventilation requirements in any animal room with an exhaust grill. Simply relay the dimensions to your local rep or directly to Animal Care Systems, and a price quote will be generated.

Product: M79260



Venting & Ducting

High-temperature 6-foot Flex Hose Assembly

Standard hose shipped with all racks.

Product: M79H06

High Temperature Custom Length Flex Hose; 25 Feet, Max Length

Replace last two digits (represented by XX, below) in part number with desired length in feet.

Product: M79HXX

Stainless Steel Hose Clamp, 3-inch

Fits standard rack hoses.

Product: M21041

Hose Connector Fitting, 3-inch

Fits standard rack hoses.

Product: M21050GFN



Light Weight Flex Hose Assembly

Not suitable for sterilization.

5-foot Product: M79056P

10-foot Product: M79055P

15-foot Product: M79051P

20-foot Product: M79052P



T-Duct Assembly

Available with 3-, 4-, or 6-inch connection.

3-inch Product: M79273

4-inch Product: M79270

6-inch Product: M79275



Optihose Guide Bracket

Guides and holds exhaust hoses neatly in place alongside rack for exhaust drops not in the ceiling.

Product: C40601



Venting & Ducting

Ceiling Flange

Standard hose connection on Animal Care Systems racks.

Product: M21061GFN



Ceiling Flange Cap

Cap open ceiling flange connection(s) on a rack when fewer exhaust hoses are used.

Product: M21080



Load Simulator Cap

Cap open exhaust hose connections to simulate exhaust system load when a rack is absent.

Product: M21081



Ceiling Drop Adapter

Bare, unmodified.

Product: M21090



Load Simulator Cap With Filter

Product: M21081F

Venting & Ducting

Quatro Air

Quatro Air is a self-contained canister ventilator intended for use with an Animal Care Systems rack when room exhaust ventilation is not available. Each Quatro Air unit is fitted with either single or dual exhaust hose thimble connectors.

As air is drawn through the Quatro Air system, it undergoes three stages of filtration before being released back into the room through the louvers near the bottom. A pre-filter removes larger particles from the air, and a HEPA filter removes remaining smaller particles, rendering the air mechanically pure. Finally, an activated carbon bed removes odorous chemicals that may also represent a significant breathing hazard to personnel and animals.

The Quatro Air unit has three operation speeds and can move up to 120 cubic feet of air per minute with sufficient static pressure needed to ventilate an Animal Care Systems rack.

Quatro Air Filtration Unit

120V System: M83100

220V System: M83101

Replacement Filters

99.97% HEPA Filter: M831F074

Filter Pads (6 pack): M831F069-220

Filter Pads (12 pack): M831F069-71

Pleated Pre-Filter (6 pack): M831F071

Carbon Module

Product: M831F072-GPC

Bulk Chemical Media

Good for approximately 3-4 refills of an F072 module.

Product: M831NC-GPC

